

PROJECT:SENIOR RESIDENTIAL DEVELOPMENT

PLANSET:CONCEPT FOOTPATH DESIGN

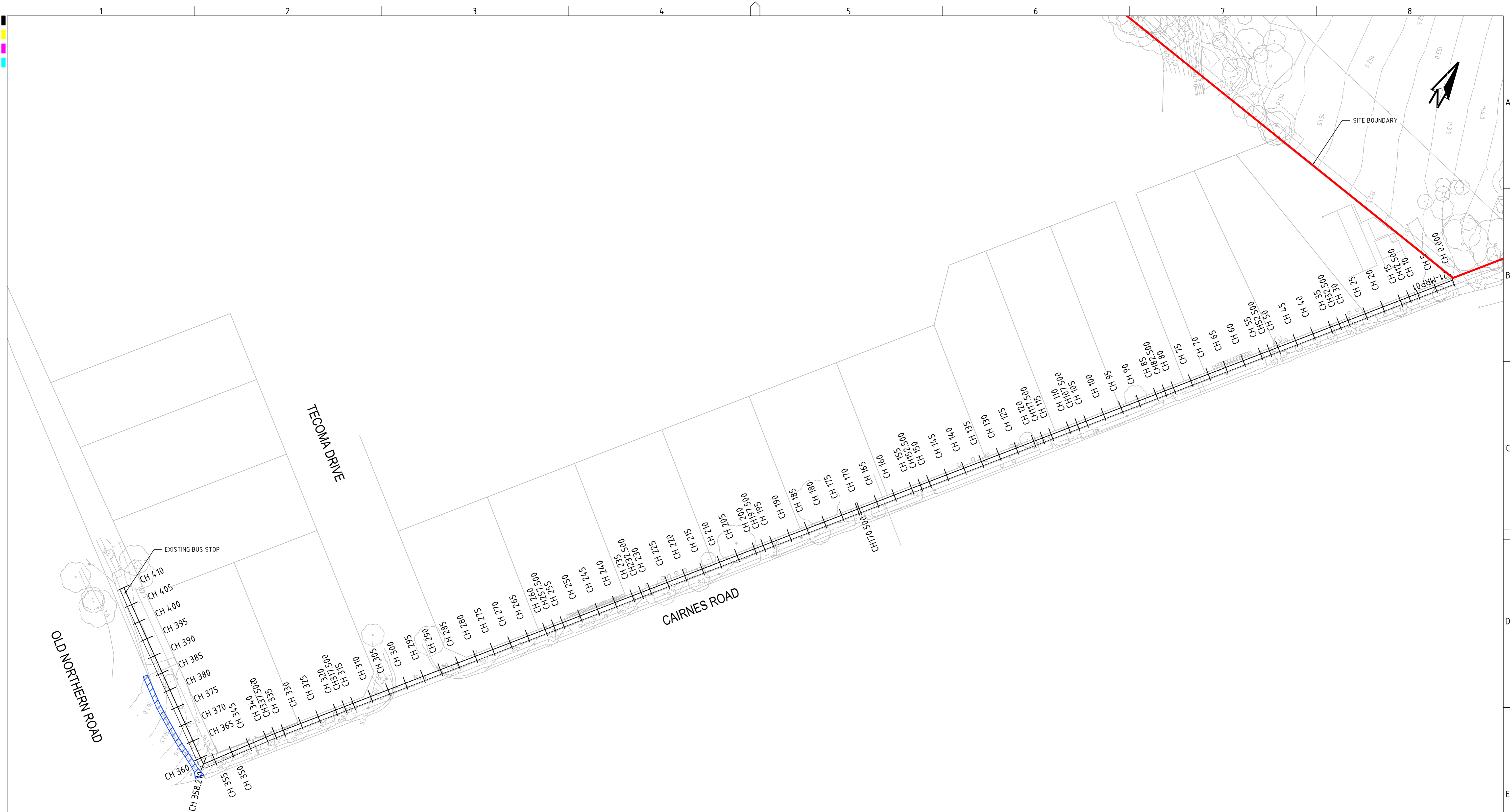
CLIENT:BLAKE ORGANISATION



DRAWING LIST		
DWG NO.	REV	DWG TITLE
GENERAL		
PS01-A000	C	COVER SHEET
ROADWORK		
PS01-DZ00	B	PROPOSED & EXISTING NEW FOOTPATH ALIGNMENT (SHEET 1)
PS01-DZ01	C	PROPOSED & EXISTING NEW FOOTPATH ALIGNMENT (SHEET 2)
PS01-DZ02	C	PROPOSED & EXISTING NEW FOOTPATH CONTSTRUCTION LONGITUDINAL (21-MRP01 CH 0- 300)
PS01-DZ03	C	PROPOSED & EXISTING NEW FOOTPATH CONTSTRUCTION LONGITUDINAL (21-MRP01 CH 300-410)
PS01-DZ04	C	PROPOSED NEW FOOTPATH CONTSTRUCTION CROSS SECTIONS (21-MRP01 CH 0- 80)
PS01-DZ05	C	PROPOSED NEW FOOTPATH CONTSTRUCTION CROSS SECTIONS (21-MRP01 CH 82.5- 160)
PS01-DZ06	C	PROPOSED NEW FOOTPATH CONTSTRUCTION CROSS SECTIONS (21-MRP01 CH 165- 245)
PS01-DZ07	C	PROPOSED NEW FOOTPATH CONTSTRUCTION CROSS SECTIONS (21-MRP01 CH 250-345)
PS01-DZ08	C	PROPOSED NEW FOOTPATH CONTSTRUCTION CROSS SECTIONS (21-MRP01 CH 350-410)

LGA: HORNSBY SHIRE COUNCIL

47 CAIRNES ROAD, GLENORIE, NSW



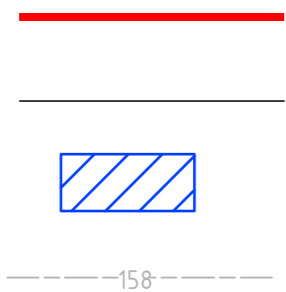
KEY

APPROXIMATE SITE BOUNDARY

PROPOSED FOOT PATH EDGE

EXISTING FOOTPATH

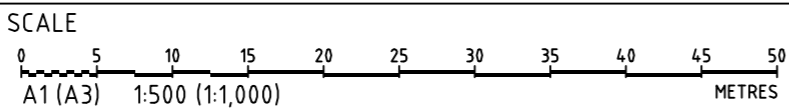
EXISTING CONTOUR



NOTE:

- AERIAL PHOTOGRAPH SOURCED FROM NEARMAP DATED 2018-07-31.
- DETAILED DESIGN IS REQUIRED TO ASSESS THE COMPLIANCE OF THE EXISTING DRIVEWAYS.

REV	DESCRIPTION	DATE	DRAWN	DESIGNED	CHECKED	APPRVD
B	PER CLIENT'S COMMENTS	16/10/18	VH	VH	TH	GT
A	INITIAL RELEASE	24/09/2018	VH	VH	CG/TH	GT



GRID	DATUM	PROJECT MANAGER
MGA	mAHD	GT
DISCLAIMER & COPYRIGHT		
This plan must not be used for construction unless signed as approved by principal certifying authority.		
All measurements in millimetres unless otherwise specified.		
This drawing must not be reproduced in whole or part without prior written consent of Martens & Associates Pty Ltd.		
(C) Copyright Martens & Associates Pty Ltd		

CLIENT
BLAKE ORGANISATION
PROJECT NAME/PLANSET TITLE
SENIOR RESIDENTIAL DEVELOPMENT CONCEPT FOOTPATH DESIGN
47 CAIRNES ROAD, GLENORIE NSW



Consulting Engineers
Environment
Water
Geotechnical
Civil

Suite 201, 20 George St, Hornsby, NSW 2077 Australia Phone: (02) 9476 9999 Fax: (02) 9476 8767
Email: mail@martens.com.au Internet: www.martens.com.au

DRAWING TITLE				
PROPOSED & EXISTING NEW FOOTPATH ALIGNMENT (SHEET 1)				
PROJECT NO.	PLANSET NO.	RELEASE NO.	DRAWING NO.	REVISION
P18064.67	PS01	R03	PS01-DZ00	B

CONCEPT DESIGN



KEY

APPROXIMATE SITE BOUNDARY

PROPOSED FOOT PATH EDGE

EXISTING FOOTPATH

NOTE:

- AERIAL PHOTOGRAPH SOURCED FROM NEARMAP DATED 2018-07-31.
- DETAILED DESIGN IS REQUIRED TO ASSESS THE COMPLIANCE OF THE EXISTING DRIVEWAYS.

REV	DESCRIPTION	DATE	DRAWN	DESIGNED	CHECKED	APPRVD
C	PER CLIENT'S COMMENTS	16/10/18	VH	VH	TH	GT
B	AMENDED FOR FINAL RELEASE	24/09/2018	VH	VH	CG/TH	GT
A	INITIAL RELEASE	21/09/2018	VH	VH		

SCALE
0 5 10 15 20 25 30 35 40 45 50
A1 (A3) 1:500 (1:1,000) METRES

GRID	DATUM	PROJECT MANAGER
MGA	mAHD	GT
DISCLAIMER & COPYRIGHT		
This plan must not be used for construction unless signed as approved by principal certifying authority.		
All measurements in millimetres unless otherwise specified.		
This drawing must not be reproduced in whole or part without prior written consent of Martens & Associates Pty Ltd		
(C) Copyright Martens & Associates Pty Ltd		

CLIENT
BLAKE ORGANISATION
PROJECT NAME/PLANSET TITLE
SENIOR RESIDENTIAL DEVELOPMENT
CONCEPT FOOTPATH DESIGN
47 CAIRNES ROAD, GLENORIE
NSW



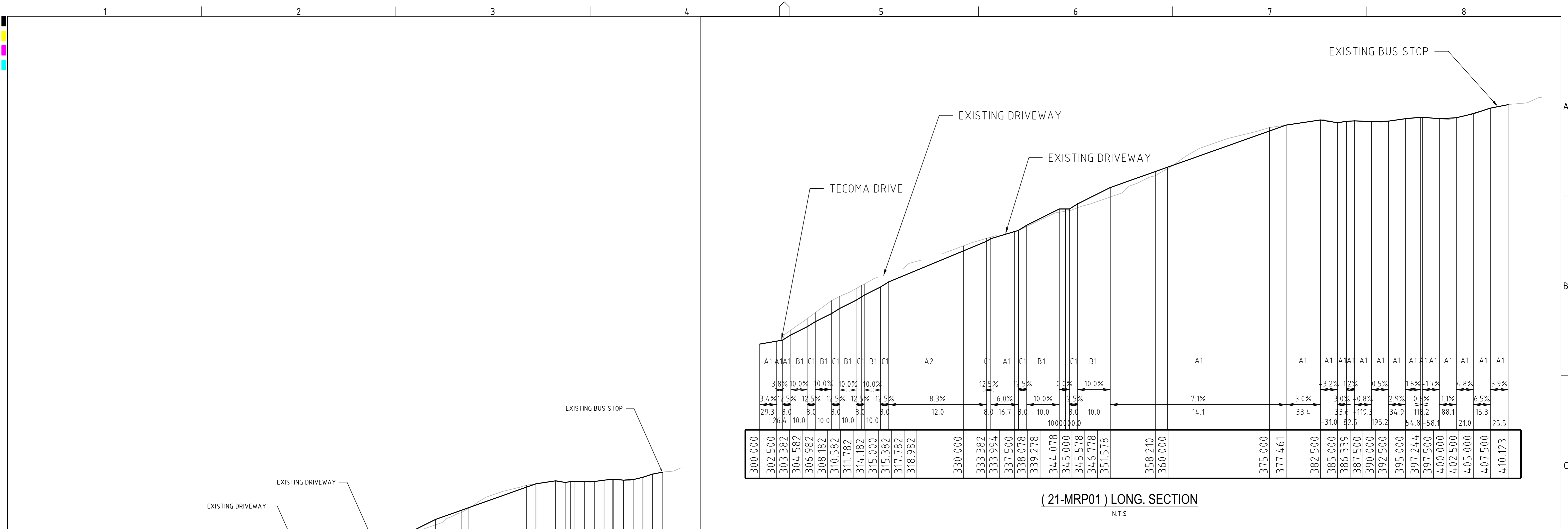
Consulting Engineers
Environment
Water
Geotechnical
Civil

Suite 201, 20 George St, Hornsby, NSW 2077 Australia Phone: (02) 9476 9999 Fax: (02) 9476 8767
Email: mail@martens.com.au Internet: www.martens.com.au

DRAWING TITLE				
PROPOSED & EXISTING NEW FOOTPATH ALIGNMENT (SHEET 2)				
PROJECT NO.	PLANSET NO.	RELEASE NO.	DRAWING NO.	REVISION
P1806467	PS01	R03	PS01-DZ01	C

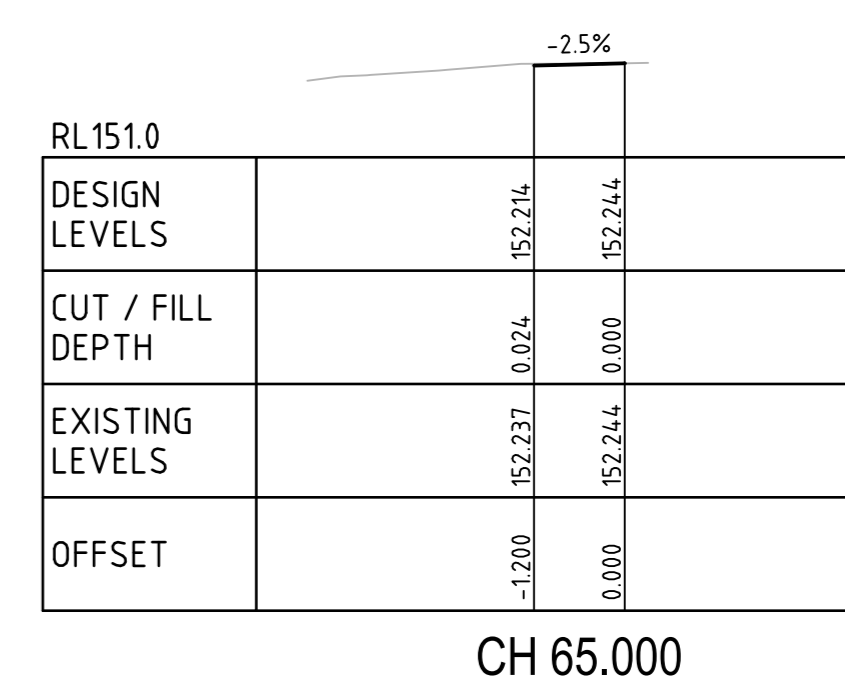
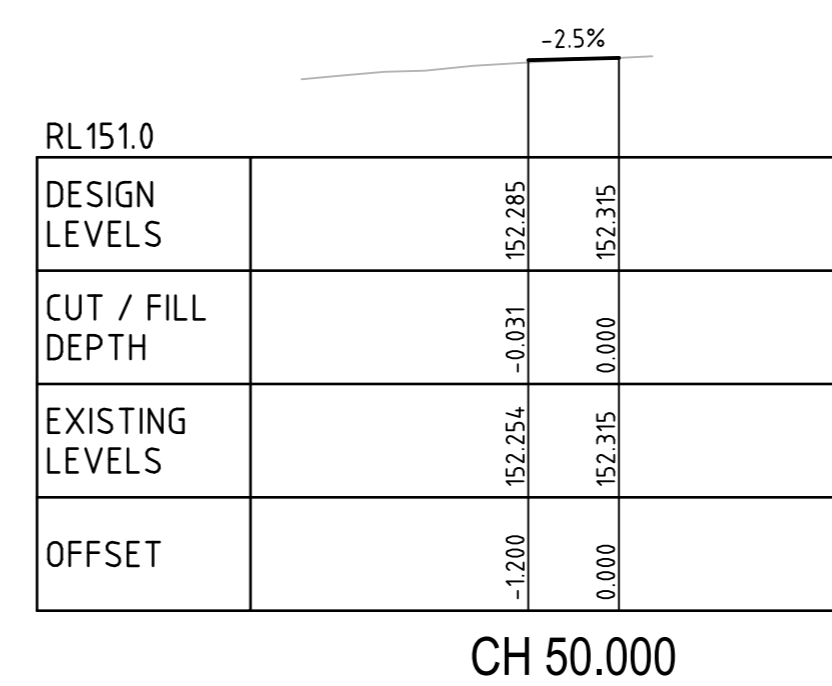
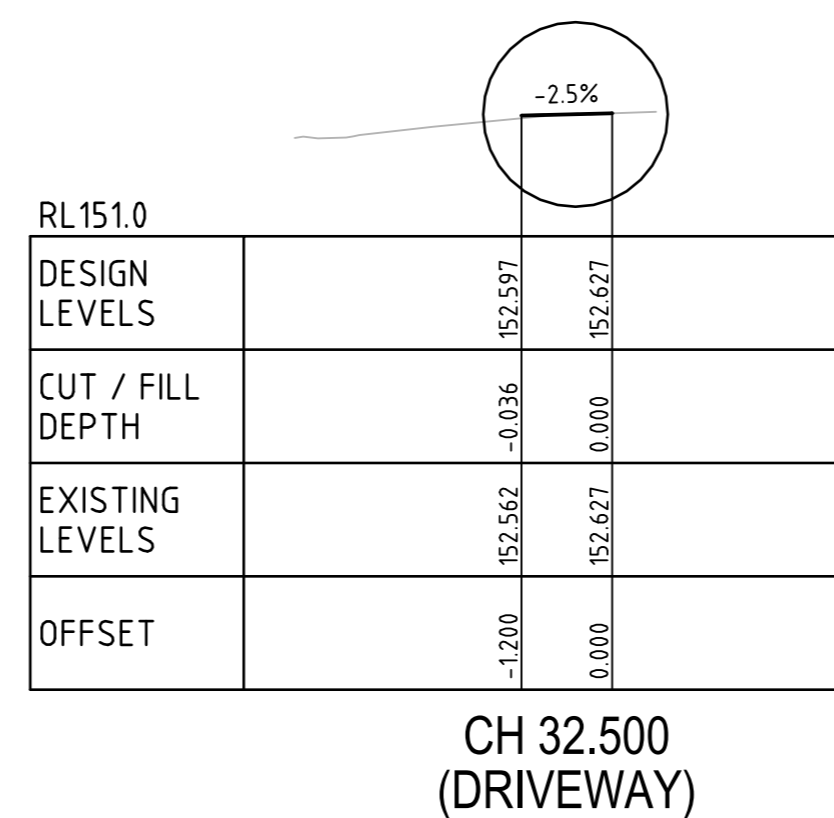
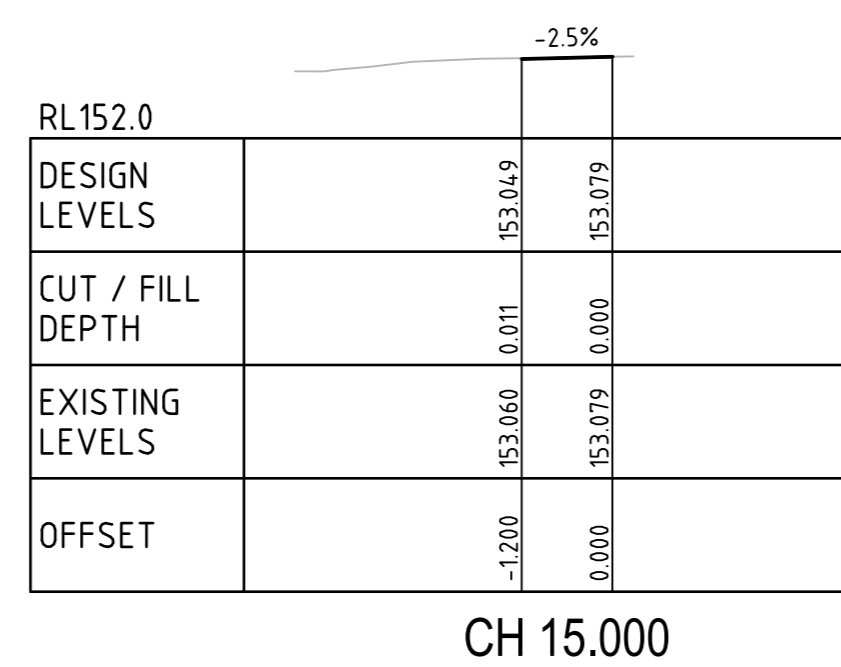
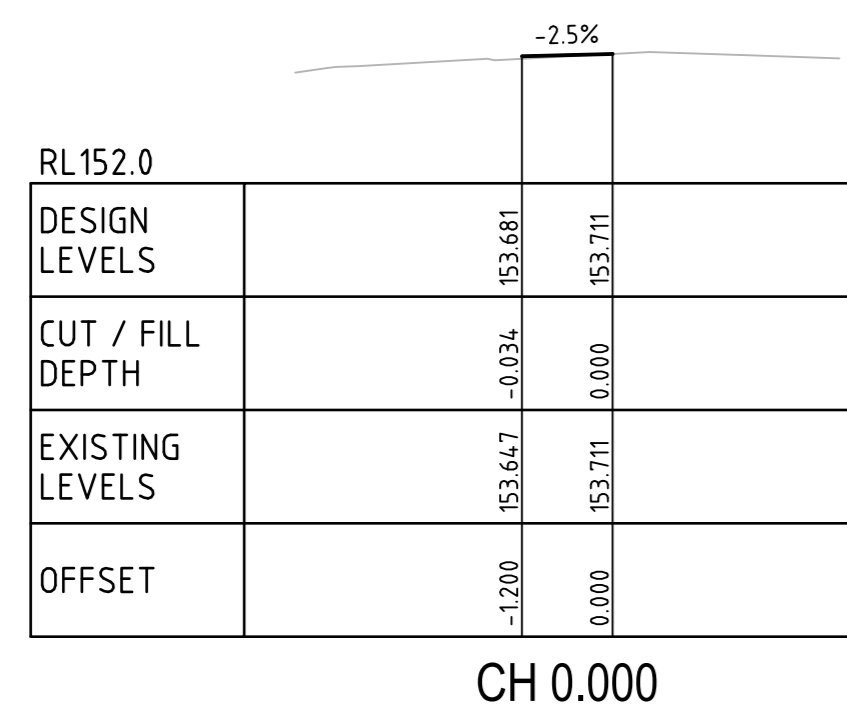
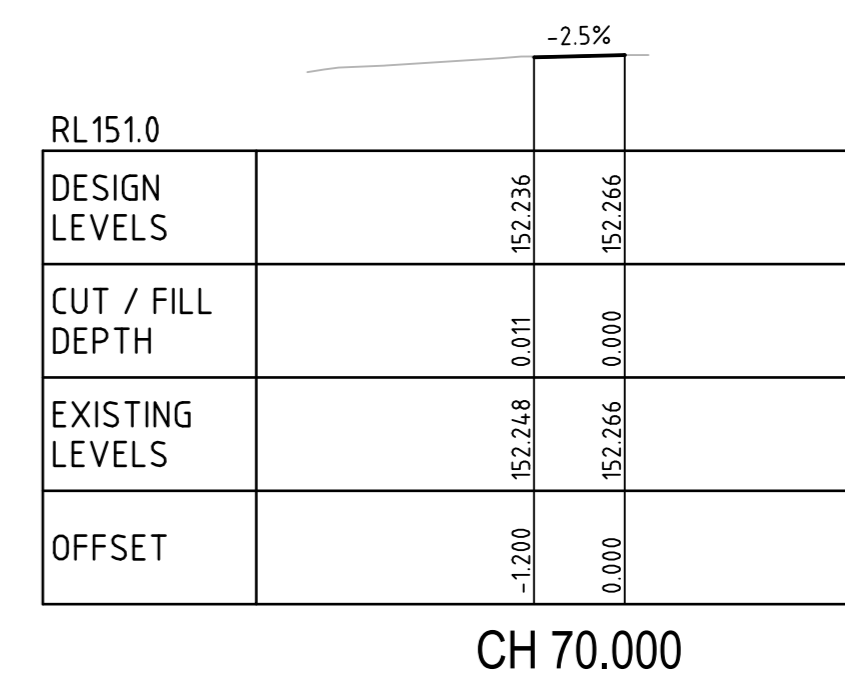
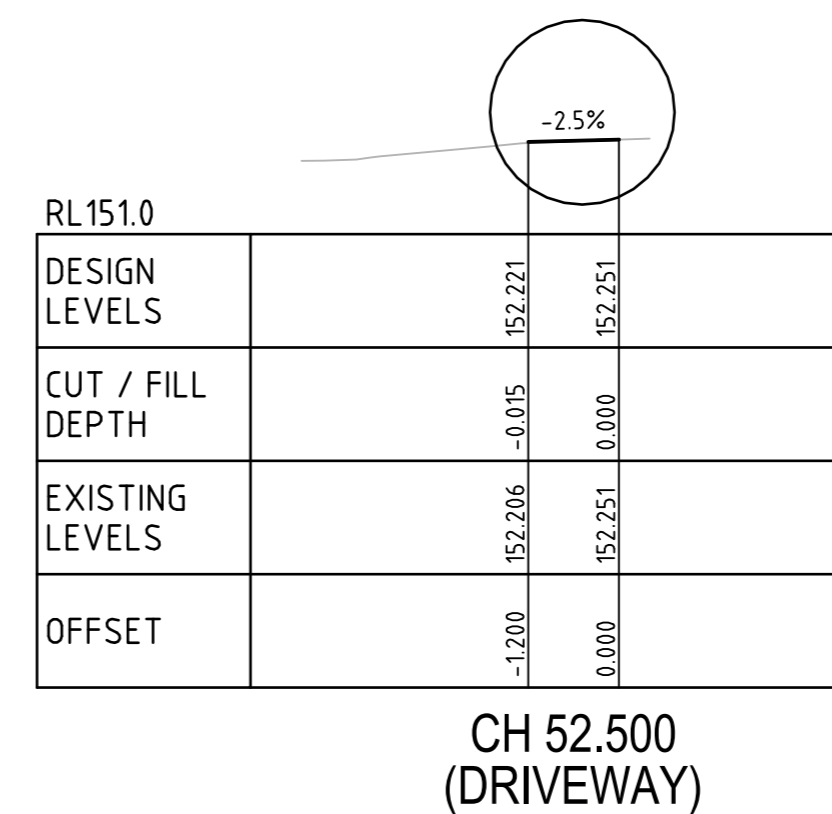
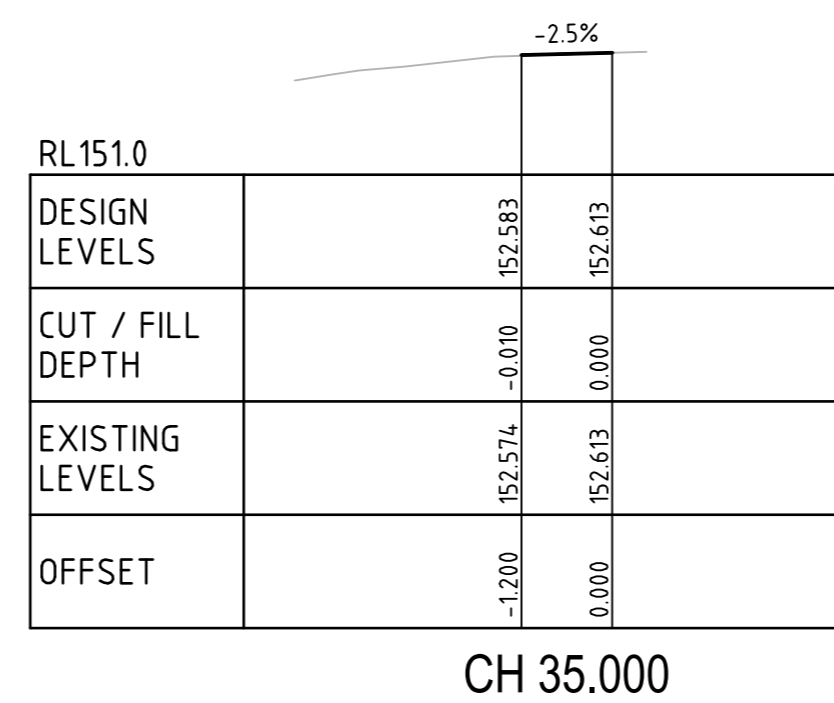
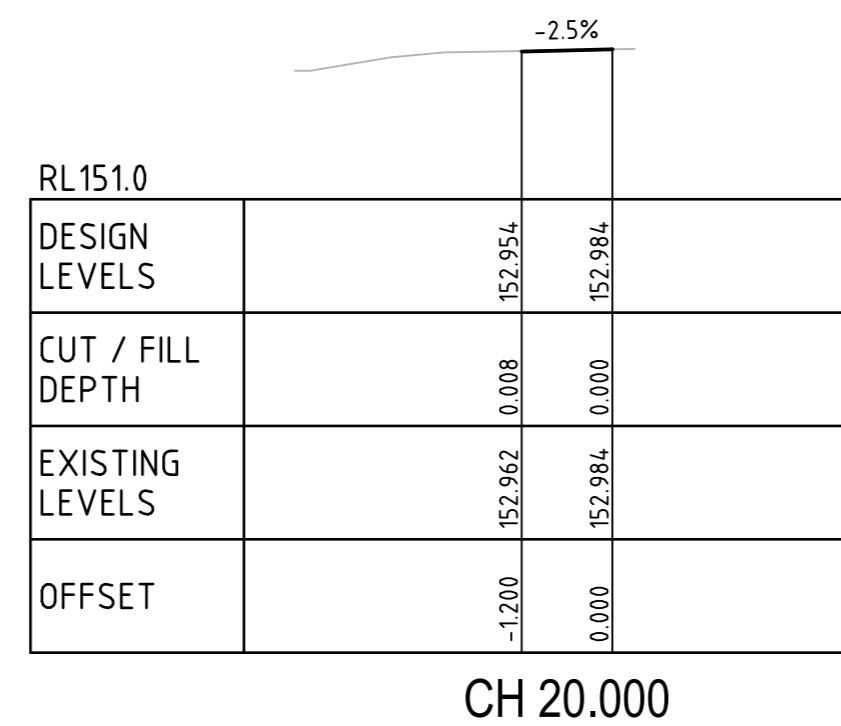
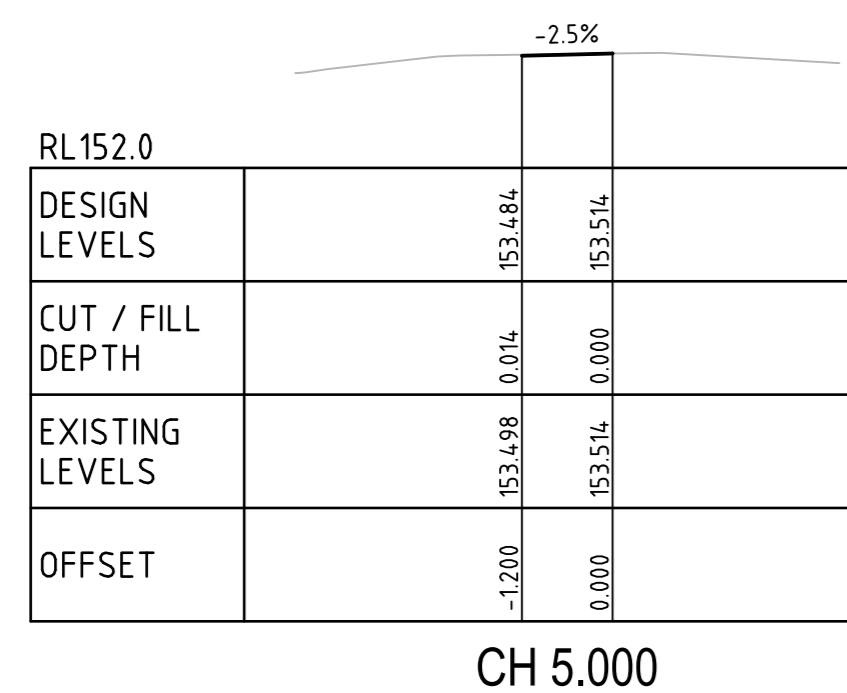
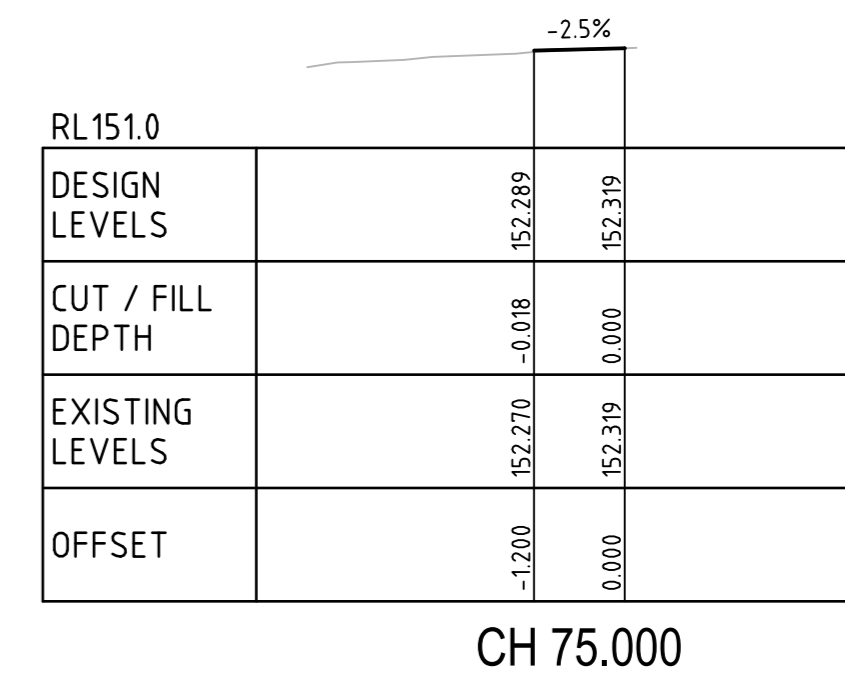
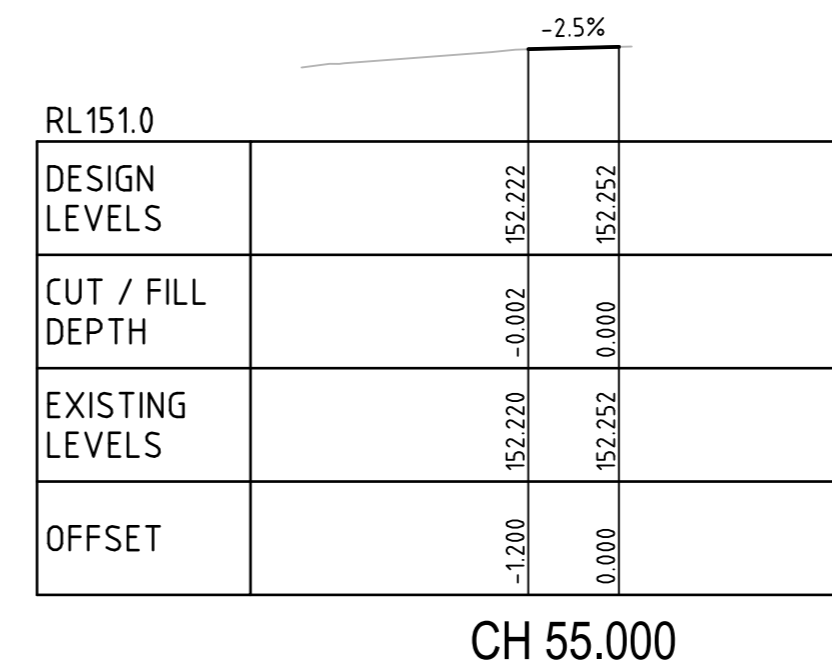
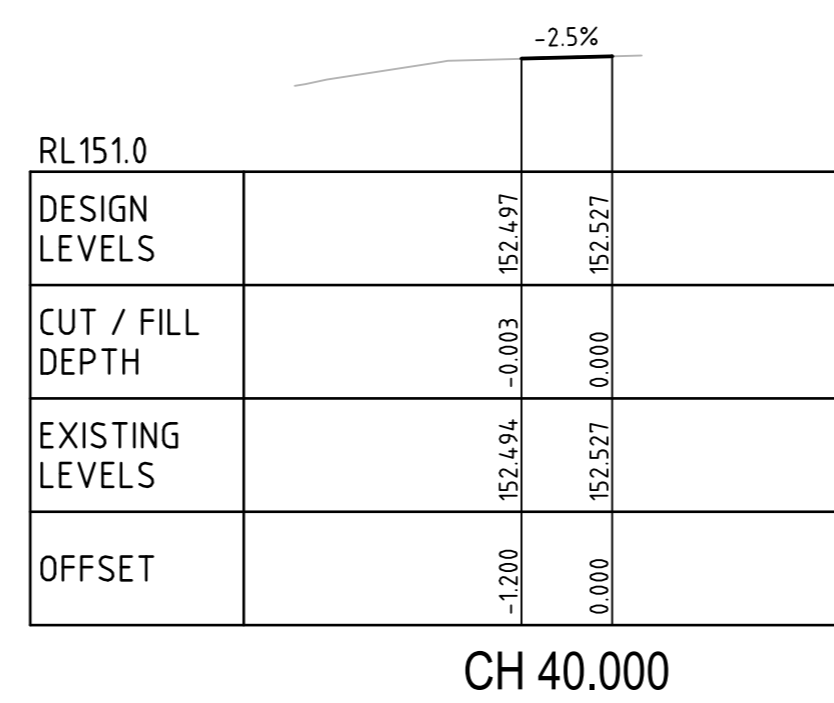
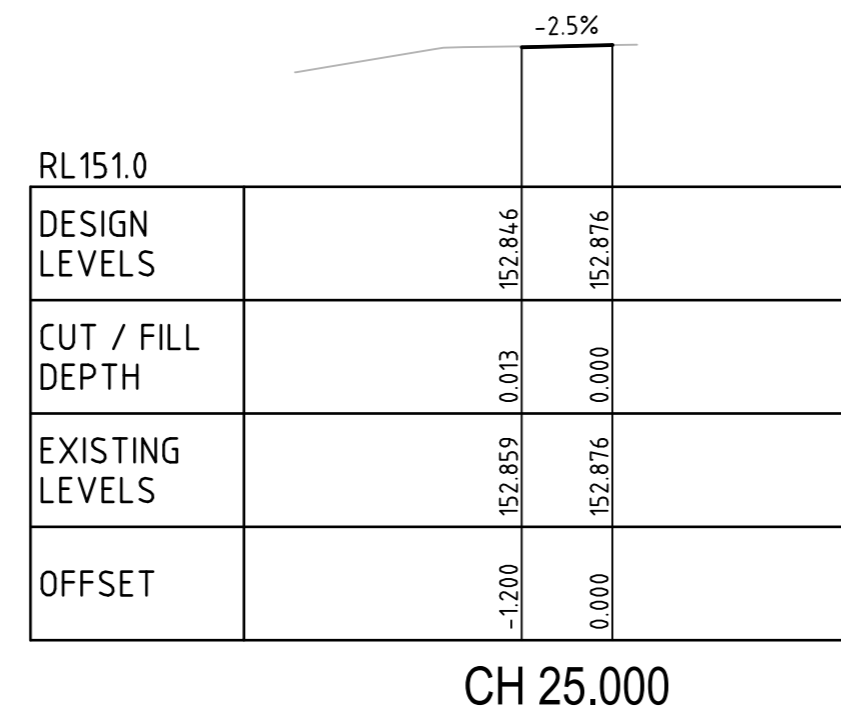
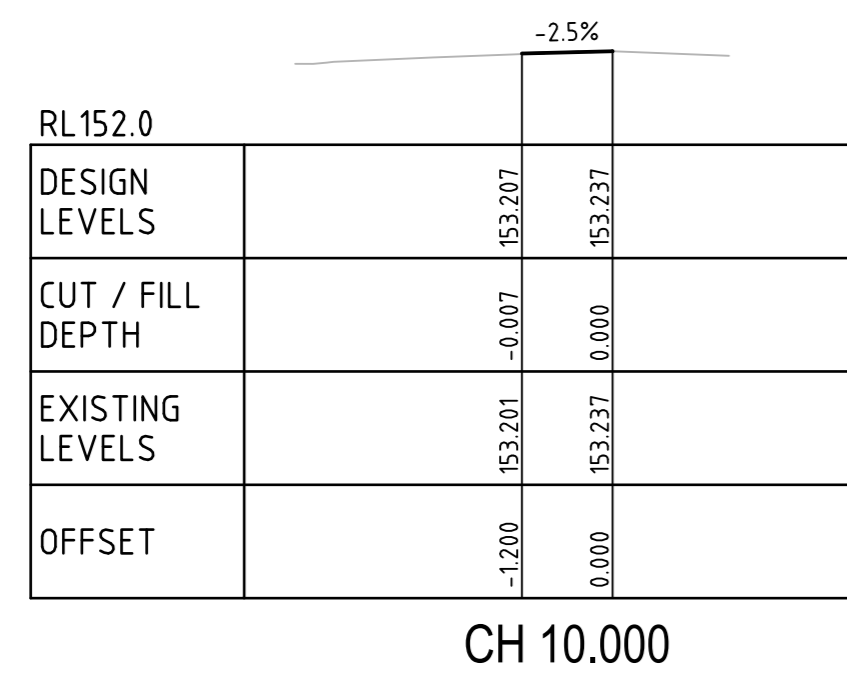
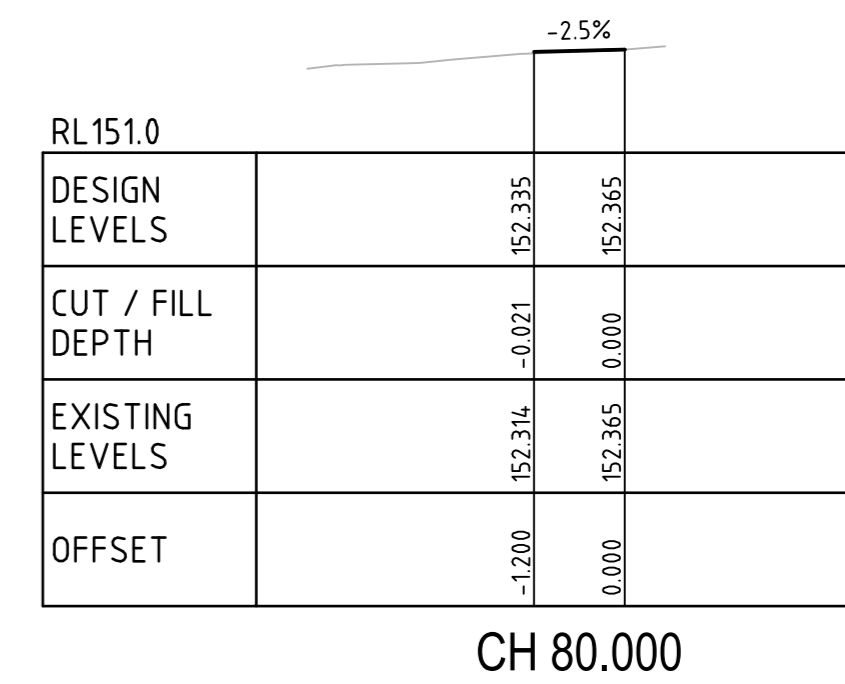
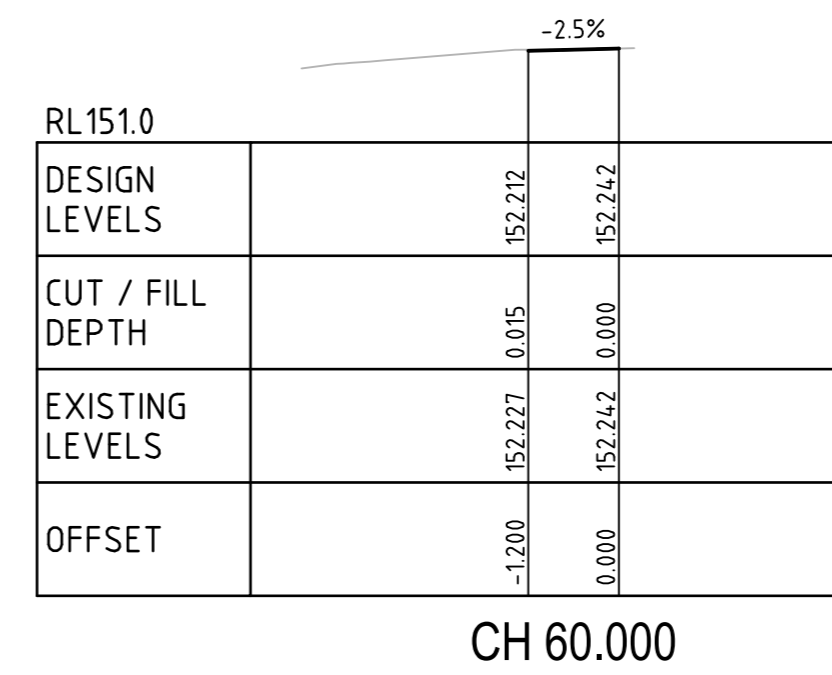
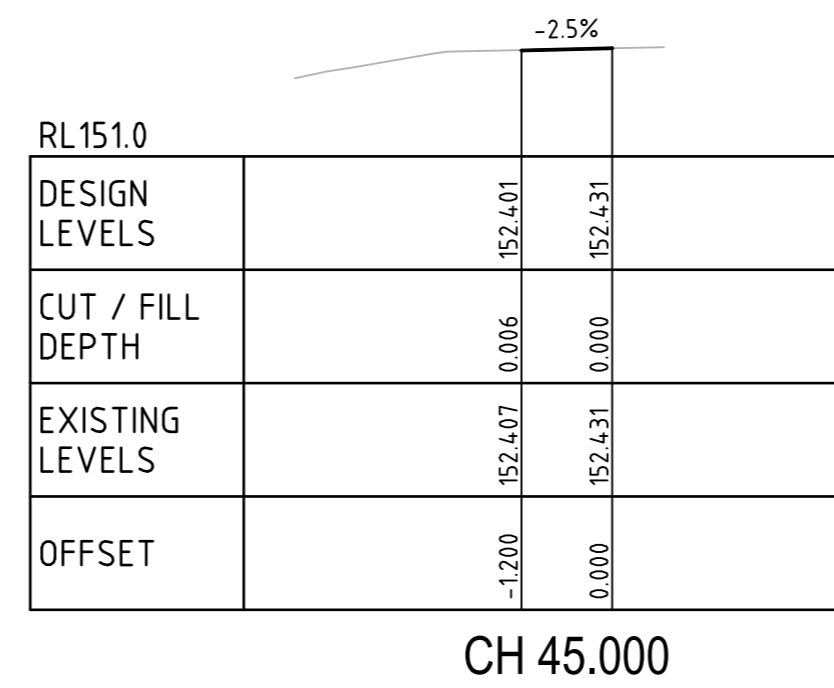
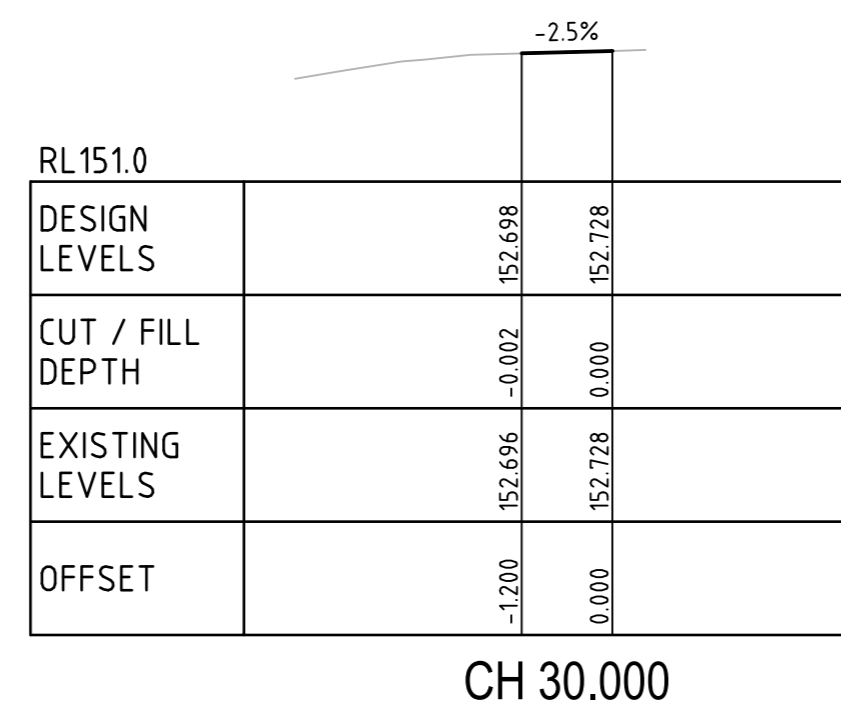
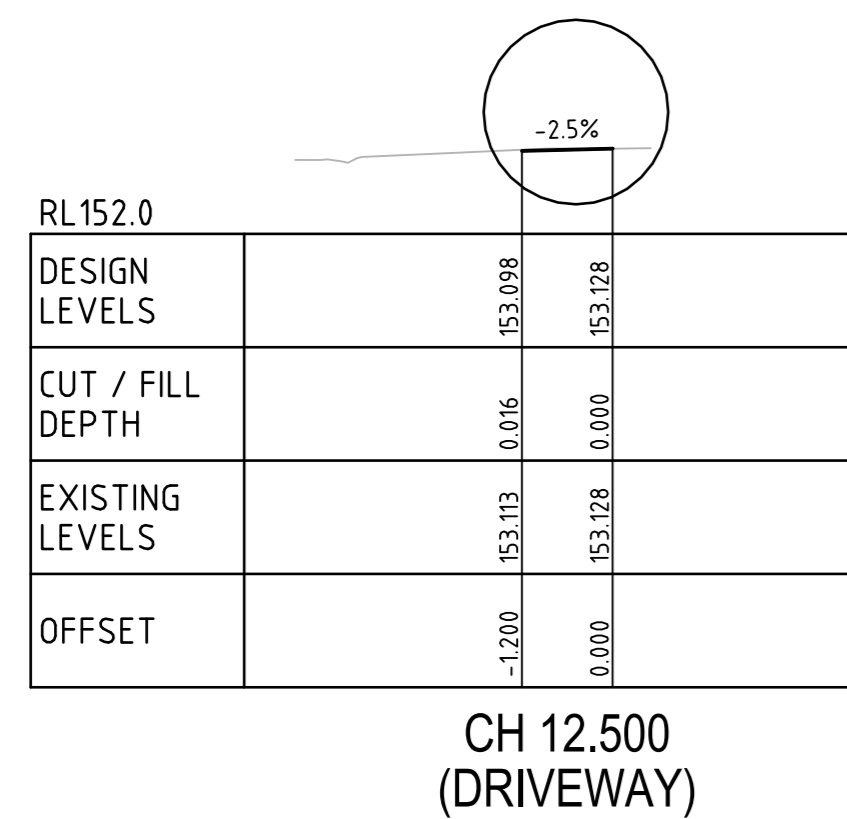
CONCEPT DESIGN

- LONGITUDINAL GRADES < 7.1% EXCEPT WHERE NOTED.
- PROPOSED AND EXISTING FOOTPATH LEVELS BASED ON SURVEY PROVIDED BY SURVEY PLUS.

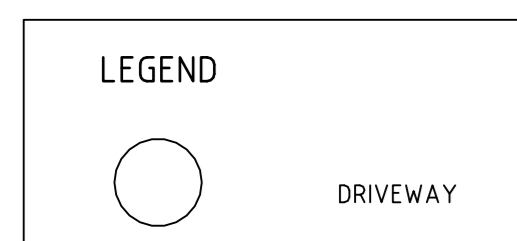


CRITERIA
VERTICAL GRADE (%)
VERTICAL GRADE (1 IN ...)
HORIZONTAL CURVE RADIUS (m)
DATUM RL 149.000

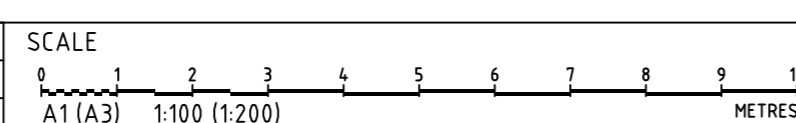
DESIGN SURFACE LEVELS	EXISTING SURFACE LEVELS	CUT / FILL DEPTH	CHAINAGE
300.000	156.133	0.000	300.000
302.500	156.219	0.000	302.500
303.382	156.219	0.000	303.382
304.582	156.402	-0.182	304.582
306.982	156.545	-0.142	306.982
308.182	156.880	-0.238	308.182
310.582	156.642	-0.266	310.582
311.782	157.059	-0.379	311.782
313.182	157.412	-0.379	313.182
314.582	157.324	-0.352	314.582
315.982	157.182	-0.352	315.982
317.382	157.182	-0.332	317.382
318.782	157.182	-0.321	318.782
320.182	157.182	-0.321	320.182
321.582	157.182	-0.321	321.582
322.982	157.182	-0.321	322.982
324.382	157.182	-0.321	324.382
325.782	157.182	-0.321	325.782
327.182	157.182	-0.321	327.182
328.582	157.182	-0.321	328.582
329.982	157.182	-0.321	329.982
331.382	157.182	-0.321	331.382
332.782	157.182	-0.321	332.782
334.182	157.182	-0.321	334.182
335.582	157.182	-0.321	335.582
336.982	157.182	-0.321	336.982
338.382	157.182	-0.321	338.382
339.782	157.182	-0.321	339.782
341.182	157.182	-0.321	341.182
342.582	157.182	-0.321	342.582
343.982	157.182	-0.321	343.982
345.382	157.182	-0.321	345.382
346.782	157.182	-0.321	346.782
348.182	157.182	-0.321	348.182
349.582	157.182	-0.321	349.582
350.982	157.182	-0.321	350.982
352.382	157.182	-0.321	352.382
353.782	157.182	-0.321	353.782
355.182	157.182	-0.321	355.182
356.582	157.182	-0.321	356.582
357.982	157.182	-0.321	357.982
359.382	157.182	-0.321	359.382
360.782	157.182	-0.321	360.782
362.182	157.182	-0.321	362.182
363.582	157.182	-0.321	363.582
364.982	157.182	-0.321	364.982
366.382	157.182	-0.321	366.382
367.782	157.182	-0.321	367.782
369.182	157.182	-0.321	369.182
370.582	157.182	-0.321	370.582
371.982	157.182	-0.321	371.982
373.382	157.182	-0.321	373.382
374.782	157.182	-0.321	374.782
376.182	157.182	-0.321	376.182
377.582	157.182	-0.321	377.582
378.982	157.182	-0.321	378.982
380.382	157.182	-0.321	380.382
381.782	157.182	-0.321	381.782
383.182	157.182	-0.321	383.182
384.582	157.182	-0.321	384.582
385.982	157.182	-0.321	385.982
387.382	157.182	-0.321	387.382
388.782	157.182	-0.321	388.782
390.182	157.182	-0.321	390.182
391.582	157.182	-0.321	391.582
392.982	157.182	-0.321	392.982
394.382	157.182	-0.321	394.382
395.782	157.182	-0.321	395.782
397.182	157.182	-0.321	397.182
398.582	157.182	-0.321	398.582
399.982	157.182	-0.321	399.982
401.382	157.182	-0.321	401.382
402.782	157.182	-0.321	402.782
404.182	157.182	-0.321	404.182
405.582	157.182	-0.321	405.582
406.982	157.182	-0.321	406.982
408.382	157.182	-0.321	408.382
409.782	157.182	-0.321	409.782
411.182	157.182	-0.321	411.182
412.582	157.182	-0.321	412.582
413.982	157.182	-0.321	413.982
415.382	157.182	-0.321	415.382
416.782	157.182	-0.321	416.782
418.182	157.182	-0.321	418.182
419.582	157.182	-0.321	419.582
420.982	157.182	-0.321	420.982
422.382	157.182	-0.321	422.382
423.782	157.182	-0.321	423.782
425.182	157.182	-0.321	425.182
426.582	157.182	-0.321	426.582
427.982	157.182	-0.321	427.982
429.382	157.182	-0.321	429.382
430.782	157.182	-0.321	430.782
432.182	157.182	-0.321	432.182
433.582	157.182	-0.321	433.582
434.982	157.182	-0.321	434.982
436.382	157.182	-0.321	436.382
437.782	157.182	-0.321	437.782
439.182	157.182	-0.321	439.182
440.582	157.182	-0.321	440.582
441.982	157.182	-0.321	441.982
443.382	157.182	-0.321	443.382
444.782	157.182	-0.321	444.782
446.182	157.182	-0.321	446.182
447.582	157.182	-0.321	447.582
448.982	157.182	-0.321	448.982
450.382	157.182	-0.321	450.382
451.782	157.182	-0.321	451.782
453.182	157.182	-0.321	453.182
454.582	157.182	-0.321	454.582
455.982	157.182	-0.321	455.982
457.382	157.182	-0.321	457.382
458.782	157.182	-0.321	458.782
460.182	157.182	-0.321	460.182
461.582	157.182	-0.321	461.582
462.982	157.182	-0.321	462.982
464.382	157.182	-0.321	464.382
465.782	157.182	-0.321	465.782
467.182	157.182	-0.321	467.182
468.582	157.182	-0.321	468.582
469.982	157.182	-0.321	469.982
471.382	157.182	-0.321	471.382
472.782	157.182	-0.321	472.782
474.182	157.182	-0.321	474.182
475.582	157.182	-0.321	475.582
476.982	157.182	-0.321	476.982
478.382	157.182	-0.321	478.382
479.782	157.182	-0.321	479.782
481.182	157.182	-0.321	481.182
482.582	157.182	-0.321	482.582
483.982	157.182	-0.321	483.982
485.382	157.182	-0.321	485.382
486.782	157.182	-0.321	486.782
488.182	157.182	-0.321	488.182
489.582	157.182	-0.321	489.582
490.982	157.182	-0.321	490.982
492.382	157.182	-0.321	492.382
493.782	157.182	-0.321	493.782
495.182	157.182	-0.321	495.182
496.582	157.182	-0.321	496.582
497.982	157.182	-0.321	497.982
499.382	157.182	-0.321	499.382
500.782	157.182	-0.321	500.782
502.182	157.182	-0.321	502.182
503.582	157.182	-0.321	503.582
504.982	157.182	-0.321	504.982
506.382	157.182	-0.321	506.382
507.782	157.182	-0.321	507.782
509.182	157.182	-0.321	509.182
510.582	157.182	-0.321	510.582
511.982	157.182	-0.321	511.982
513.382	157.182	-0.321	513.382
514.782	157.182	-0.321	514.782
516.182	157.182	-0.321	516.182
517.582	157.182	-0.321	517.582
518.982	157.182	-0.321	518.982
520.382	157.182	-0.321	520.382
521.782	157.182	-0.321	521.782
523.182	157.182	-0.321	523.182
524.582	157.182	-0.321	524.582
525.982	157.182	-0.321	525.982
527.382	157.182	-0.321	527.382
528.782	157.182	-0.321	528.782
530.182	157.182	-0.321	530.182
531.582	157.182	-0.321	531.582
532.982	157.182	-0.321	532.982
534.382	157.182	-0.321	534.382
535.782	157.182	-0.321	535.782
537.182	157.182	-0.321	537.182
538.582	157.182	-0.321	538.582
539.982	157.182	-0.321	539.982
541.382	157.182	-0.321	541.382
542.782	157.182	-0.321	542.782
544.182	157.182	-0.321	544.182
545.582	157.182	-0.321	545.582
546.982	157.182	-0.321	546.982
548.382	157.182	-0.321	548.382
549.782	157.182	-0.321	549.782
551.182	157.182	-0.321	551.182
552.582	157.182	-0.321	552.582
553.982	157.182	-0.321	553.982
555.382	157.182	-0.321	555.382
556.782	157.182	-0.321	556.782
558.182	157.182	-0.321	558.182
559.582	157.182	-0.321	559.582
560.982	157.182	-0.321	560.982
562.382	157.182	-0.321	562.382
563.782	157.182	-0.321	563.782
565.182	157.182	-0.321	565.182
566.582	157.182	-0.321	566.582
567.982	157.182	-0.321	567.982
569.382	157.182	-0.321	569.382
570.782	157.182	-0.321	570.782
572.182	157.182	-0.321	572.182
573.582	157.182	-0.321	573.582
574.982	157.182	-0.321	574.982
576.382	157.182	-0.321	576.382
577.782	157.182	-0.321	577.782
579.182	157.182	-0.321	579.182
580.582	157.182	-0.321	580.582
581.982	157.182	-0.321	581.982
583.382	157.182	-0.321	583.382
584.782	157.182	-0.321	584.782
586.182	157.182	-0.321	586.182
587.582	157.182	-0.321	587.582
588.982	157.182	-0.321	588.982
590.382	157.182	-0.321	590.382
591.782	157.182	-0.321	591.782
593.182	157.182	-0.321	593.182
594.582	157.182	-0.321	594.582
595.982	157.182	-0.321	595.982
597.382	157.182	-0.321	597.382
598.782	157.182	-0.321	598.782
600.182	157.182	-0.321	600.182
601.582	157.182	-0.321	601.582
602.982	157.182	-0.321	602.982
604.382	157.182	-0.321	604.382
605.782	157.182	-0.321	605.782
607.182	157.182	-0.321	607.182
608.582	157.182	-0.321	608.582
609.982	157.182	-0.321	609.982
611.382	157.182	-0.321	611.382
612.782	157.182	-0.321	612.782
614.182	157.182	-0.321	614.182
615.582	157.182	-0.321	615.582
616.982	157.182	-0.321	616.982
618.382	157.182	-0.321	618.382
619.782	157.182	-0.321	619.782
621.182	157.182	-0.321	621.182
622.582	157.182	-0.321	622.582
623.982	157.182	-0.321	623.982
625.382	157.182	-0.321	625.382
626.782	157.182	-0.321	626.782
628.182	157.182	-0.321	628.182
629.582	157.182	-0.321	629.582
630.982	157.182	-0.321	630.982
632.382	157.182	-0.321	632.382
633.782	157.182	-0.321	633.782
635.182	157.182	-0.321	635.182
636.582	157.182	-0.321	636.582
637.982	157.182	-0.321	637.982
639.382	157.182	-0.321	639.382
640.782	157.182	-0.321	640.782
642.182	157.182	-0.	



NOTE:
- NEW/PROPOSED FOOTPATH TO BE 2.5% (MAX.)



REV	DESCRIPTION	DATE	DRAWN	SIGNED	CHECKED	APPROVED
C	PER CLIENT'S COMMENTS	16/10/18	VH	VH	TH	GT
B	AMENDED FOR FINAL RELEASE	24/09/2018	VH	VH	CG/TH	GT
A	INITIAL RELEASE	21/09/2018	VH	VH		



GRID	DATUM	PROJECT MANAGER	CLIENT
MGA	mAHD	GT	BLAKE ORGANISATION
DISCLAIMER & COPYRIGHT This plan must not be used for construction unless signed as approved by principal certifying authority. All measurements in millimetres unless otherwise specified. This drawing must not be reproduced in whole or part without prior written consent of Martens & Associates Pty Ltd. (C) Copyright Martens & Associates Pty Ltd			PROJECT NAME/PLANSET TITLE SENIOR RESIDENTIAL DEVELOPMENT CONCEPT FOOTPATH DESIGN 47 CAIRNS ROAD, GLENORIE NSW

 **martens**
& Associates Pty Ltd

Consulting Engineers

Environment
Water
Geotechnical
Civil

Suite 201, 20 George St, Hornsby, NSW 2077 Australia Phone: (02) 9476 9999 Fax: (02) 9476 8767
Email: mail@martens.com.au Internet: www.martens.com.au

DRAWING TITLE					
PROPOSED NEW FOOTPATH CONSTRUCTION CROSS SECTIONS (21-MRP02 CH 0- 80)					
PROJECT NO.		PLANSET NO.	RELEASE NO.	DRAWING NO.	REVISION
P1806467		PS01	R03	PS01-DZ04	C

RL151.0			
DESIGN LEVELS		152.398	152.428
CUT / FILL DEPTH		0.057	0.000
EXISTING LEVELS		152.456	152.428
OFFSET	-1.200	0.000	

CH 95.000

RL151.0			
DESIGN LEVELS		152.404	152.434
CUT / FILL DEPTH		-0.009	0.000
EXISTING LEVELS		152.395	152.434
OFFSET	-1.200	0.000	

CH 110.000
(DRIVEWAY)

RL151.0			
DESIGN LEVELS		152.716	152.746
CUT / FILL DEPTH		0.016	
EXISTING LEVELS		152.732	
OFFSET	-1.200	0.000	

CH 125.000

RL151.0			
DESIGN LEVELS		152.104	152.134
CUT / FILL DEPTH		-0.023	0.000
EXISTING LEVELS		152.081	152.134
OFFSET	-1.200	0.000	

CH 145.000

RL150.0			
DESIGN LEVELS		151.962	151.992
CUT / FILL DEPTH		-0.030	0.000
EXISTING LEVELS		151.932	151.992
OFFSET	-1.200	0.000	

CH 160.000

RL151.0			
DESIGN LEVELS		152.340	152.370
CUT / FILL DEPTH		0.059	0.000
EXISTING LEVELS		152.399	152.370
OFFSET	-1.200	0.000	

CH 90.000

RL151.0			
DESIGN LEVELS		152.431	152.461
CUT / FILL DEPTH		0.000	0.000
EXISTING LEVELS		152.431	152.461
OFFSET	-1.200	0.000	

CH 107.500

RL151.0			
DESIGN LEVELS		152.232	152.262
CUT / FILL DEPTH		0.026	
EXISTING LEVELS		152.258	
OFFSET	-1.200	0.000	

CH 120.000

RL151.0			
DESIGN LEVELS		152.135	152.165
CUT / FILL DEPTH		-0.043	0.000
EXISTING LEVELS		152.092	152.165
OFFSET	-1.200	0.000	

CH 140.000

RL151.0			
DESIGN LEVELS		152.001	152.031
CUT / FILL DEPTH		0.011	0.000
EXISTING LEVELS		152.012	152.031
OFFSET	-1.200	0.000	

CH 155.000

RL151.0			
DESIGN LEVELS		152.313	152.343
CUT / FILL DEPTH		0.018	0.000
EXISTING LEVELS		152.331	152.343
OFFSET	-1.200	0.000	

CH 85.000

RL151.0			
DESIGN LEVELS		152.446	152.476
CUT / FILL DEPTH		-0.003	0.000
EXISTING LEVELS		152.442	152.476
OFFSET	-1.200	0.000	

CH 105.000

RL151.0			
DESIGN LEVELS		152.240	152.270
CUT / FILL DEPTH		-0.009	0.000
EXISTING LEVELS		152.231	152.270
OFFSET	-1.200	0.000	

CH 117.500
(DRIVEWAY)

RL151.0			
DESIGN LEVELS		152.217	152.247
CUT / FILL DEPTH		-0.003	0.000
EXISTING LEVELS		152.214	152.247
OFFSET	-1.200	0.000	

CH 135.000

RL151.0			
DESIGN LEVELS		152.000	152.030
CUT / FILL DEPTH		-0.008	0.000
EXISTING LEVELS		151.993	152.030
OFFSET	-1.200	0.000	

CH 152.500
(DRIVEWAY)

RL151.0			
DESIGN LEVELS		152.325	152.355
CUT / FILL DEPTH		0.005	0.000
EXISTING LEVELS		152.330	152.355
OFFSET	-1.200	0.000	

CH 82.500
(DRIVEWAY)

RL151.0			
DESIGN LEVELS		152.413	152.443
CUT / FILL DEPTH		0.061	0.000
EXISTING LEVELS		152.475	152.443
OFFSET	-1.200	0.000	

CH 100.000

RL151.0			
DESIGN LEVELS		152.309	152.339
CUT / FILL DEPTH		0.018	0.000
EXISTING LEVELS		152.327	152.339
OFFSET	-1.200	0.000	

CH 115.000

RL151.0			
DESIGN LEVELS		152.199	152.229
CUT / FILL DEPTH		0.012	0.000
EXISTING LEVELS		152.211	152.229
OFFSET	-1.200	0.000	

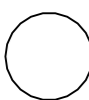
CH 130.000

RL151.0			
DESIGN LEVELS		152.023	152.053
CUT / FILL DEPTH		-0.008	0.000
EXISTING LEVELS		152.015	152.053
OFFSET	-1.200	0.000	

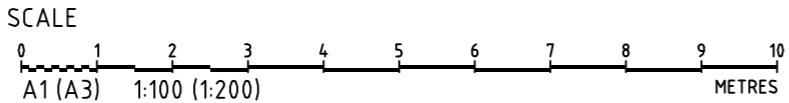
CH 150.000

NOTE:
- NEW/PROPOSED FOOTPATH TO BE 2.5% (MAX.)

LEGEND



DRIVEWAY



GRID
MGA
DATUM
mAHD
PROJECT MANAGER
GT
CLIENT
BLAKE ORGANISATION
PROJECT NAME/PLANSET TITLE
SENIOR RESIDENTIAL DEVELOPMENT
CONCEPT FOOTPATH DESIGN
47 CAIRNES ROAD, GLENORIE
NSW
DISCLAIMER & COPYRIGHT
This plan must not be used for construction unless signed as approved by principal certifying authority.
All measurements in millimetres unless otherwise specified.
This drawing must not be reproduced in whole or part without prior written consent of Martens & Associates Pty Ltd.
(C) Copyright Martens & Associates Pty Ltd



Consulting Engineers
Environment
Water
Geotechnical
Civil

Suite 201, 20 George St, Hornsby, NSW 2077 Australia Phone: (02) 9476 9999 Fax: (02) 9476 8767
Email: mail@martens.com.au Internet: www.martens.com.au

DRAWING TITLE				
PROPOSED NEW FOOTPATH CONSTRUCTION CROSS SECTIONS (21-MRP02 CH 80- 160)				
PROJECT NO. P1806467	PLANSET NO. PS01	RELEASE NO. R03	DRAWING NO. PS01-DZ05	REVISION C

CONCEPT DESIGN

RL150.0			
DESIGN LEVELS		151.804	151.834
CUT / FILL DEPTH		-0.023	0.000
EXISTING LEVELS		151.782	151.834
OFFSET		-1.200	0.000

CH 175.000

RL150.0			
DESIGN LEVELS		151.833	151.863
CUT / FILL DEPTH		-0.008	0.000
EXISTING LEVELS		151.825	151.863
OFFSET		-1.200	0.000

CH 170.500
(DRIVEWAY)

RL150.0			
DESIGN LEVELS		151.834	151.864
CUT / FILL DEPTH		-0.009	0.000
EXISTING LEVELS		151.825	151.864
OFFSET		-1.200	0.000

CH 170.000

RL150.0			
DESIGN LEVELS		151.902	151.932
CUT / FILL DEPTH		0.019	0.000
EXISTING LEVELS		151.921	151.932
OFFSET		-1.200	0.000

CH 165.000

RL151.0			
DESIGN LEVELS		152.006	152.036
CUT / FILL DEPTH		-0.016	0.000
EXISTING LEVELS		151.930	152.036
OFFSET		-1.200	0.000

CH 195.000

RL150.0			
DESIGN LEVELS		151.963	151.993
CUT / FILL DEPTH		-0.016	0.000
EXISTING LEVELS		151.947	151.993
OFFSET		-1.200	0.000

CH 190.000

RL150.0			
DESIGN LEVELS		151.877	151.907
CUT / FILL DEPTH		-0.032	0.000
EXISTING LEVELS		151.845	151.907
OFFSET		-1.200	0.000

CH 185.000

RL150.0			
DESIGN LEVELS		151.789	151.819
CUT / FILL DEPTH		-0.018	0.000
EXISTING LEVELS		151.771	151.819
OFFSET		-1.200	0.000

CH 180.000

RL151.0			
DESIGN LEVELS		152.530	152.560
CUT / FILL DEPTH		-0.087	0.000
EXISTING LEVELS		152.443	152.560
OFFSET		-1.200	0.000

CH 210.000

RL151.0			
DESIGN LEVELS		152.307	152.337
CUT / FILL DEPTH		-0.087	0.000
EXISTING LEVELS		152.220	152.337
OFFSET		-1.200	0.000

CH 205.000

RL151.0			
DESIGN LEVELS		152.106	152.136
CUT / FILL DEPTH		-0.035	0.000
EXISTING LEVELS		152.072	152.136
OFFSET		-1.200	0.000

CH 200.000

RL151.0			
DESIGN LEVELS		152.025	152.055
CUT / FILL DEPTH		-0.047	0.000
EXISTING LEVELS		151.979	152.055
OFFSET		-1.200	0.000

CH 197.500
(DRIVEWAY)

RL152.0			
DESIGN LEVELS		153.283	153.313
CUT / FILL DEPTH		0.000	0.000
EXISTING LEVELS		153.283	153.313
OFFSET		-1.200	0.000

CH 230.000

RL151.0			
DESIGN LEVELS		153.100	153.130
CUT / FILL DEPTH		-0.013	0.000
EXISTING LEVELS		153.087	153.130
OFFSET		-1.200	0.000

CH 225.000

RL151.0			
DESIGN LEVELS		152.854	152.884
CUT / FILL DEPTH		-0.077	0.000
EXISTING LEVELS		152.777	152.884
OFFSET		-1.200	0.000

CH 220.000

RL151.0			
DESIGN LEVELS		152.716	152.746
CUT / FILL DEPTH		-0.051	0.000
EXISTING LEVELS		152.665	152.746
OFFSET		-1.200	0.000

CH 215.000

RL152.0			
DESIGN LEVELS		154.013	154.043
CUT / FILL DEPTH		-0.054	0.000
EXISTING LEVELS		153.959	154.043
OFFSET		-1.200	0.000

CH 245.000

RL152.0			
DESIGN LEVELS		153.770	153.800
CUT / FILL DEPTH		-0.056	0.000
EXISTING LEVELS		153.714	153.800
OFFSET		-1.200	0.000

CH 240.000

RL152.0			
DESIGN LEVELS		153.465	153.495
CUT / FILL DEPTH		-0.059	0.000
EXISTING LEVELS		153.406	153.495
OFFSET		-1.200	0.000

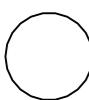
CH 235.000

RL152.0			
DESIGN LEVELS		153.358	153.388
CUT / FILL DEPTH		-0.075	0.000
EXISTING LEVELS		153.283	153.388
OFFSET		-1.200	0.000

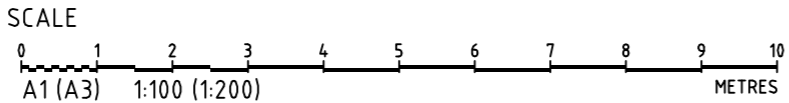
CH 232.500
(DRIVEWAY)

NOTE:
- NEW/PROPOSED FOOTPATH TO BE 2.5% (MAX.)

LEGEND



DRIVEWAY



GRID
MGA
DATUM
mAHD
PROJECT MANAGER
GT
CLIENT
BLAKE ORGANISATION
PROJECT NAME/PLANSET TITLE
SENIOR RESIDENTIAL DEVELOPMENT
CONCEPT FOOTPATH DESIGN
47 CAIRNES ROAD, GLENORIE
NSW
DISCLAIMER & COPYRIGHT
This plan must not be used for construction unless signed as approved by principal certifying authority.
All measurements in millimetres unless otherwise specified.
This drawing must not be reproduced in whole or part without prior written consent of Martens & Associates Pty Ltd.
(C) Copyright Martens & Associates Pty Ltd

martens
& Associates Pty Ltd

Consulting Engineers
Environment
Water
Geotechnical
Civil

Suite 201, 20 George St, Hornsby, NSW 2077 Australia Phone: (02) 9476 9999 Fax: (02) 9476 8767
Email: mail@martens.com.au Internet: www.martens.com.au

DRAWING TITLE PROPOSED NEW FOOTPATH CONSTRUCTION CROSS SECTIONS (21-MRP02 CH 160- 245)				
PROJECT NO. P1806467	PLANSET NO. PS01	RELEASE NO. R03	DRAWING NO. PS01-DZ06	REVISION C

CONCEPT DESIGN

